

Twin® / Twin® DG

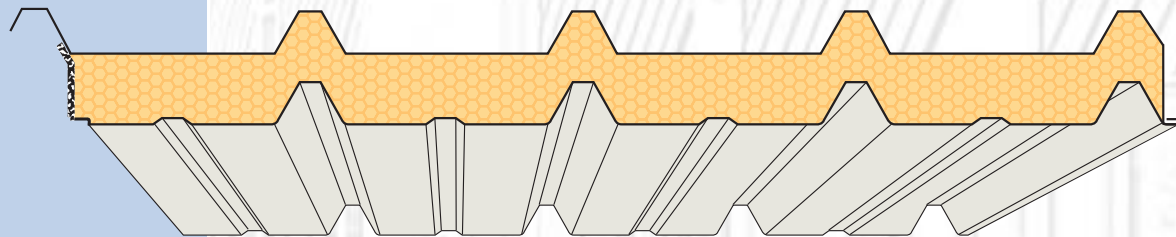
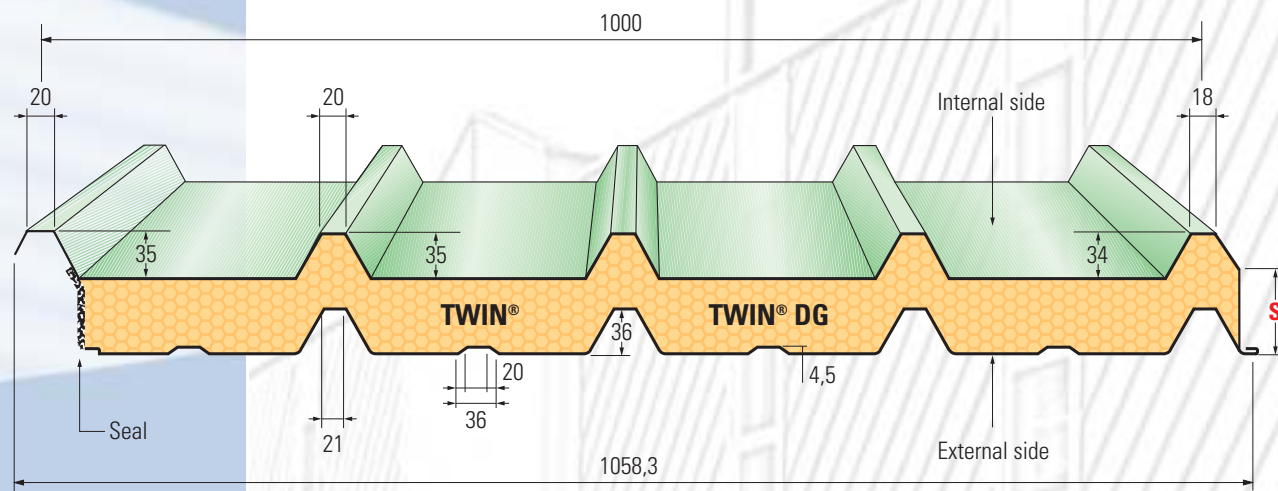


ROOF
DESIGN



Two composite panels composed of two ribbed metal sheets insulated with polyurethane - monolithic, self-supporting, insulating and resistant. **TWIN®** and **TWIN® DG** panels have a highly aesthetical design and are used for pitched roofs with a minimum slope of 7%; they can be installed on every kind of bearing structure.

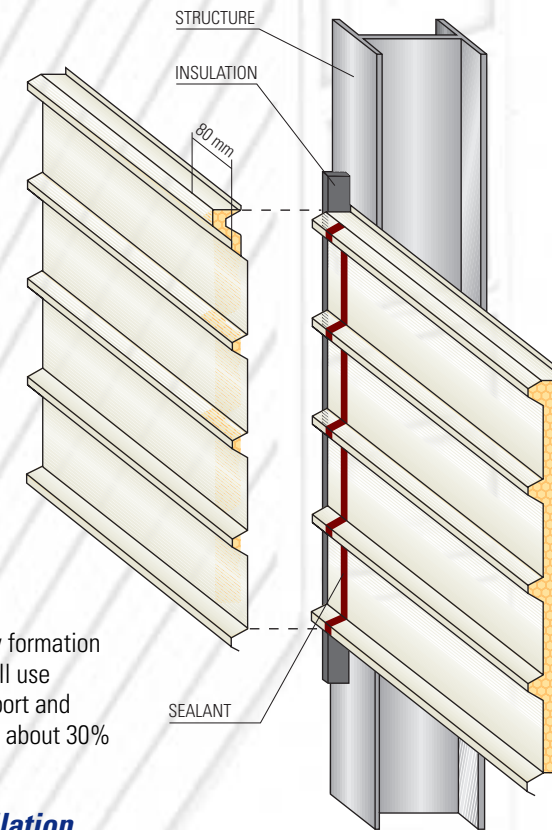
They can also be mounted as wall element. They are very practical and modular with easy assembly (the wall can be assembled without secondary structure, while the roofing can be assembled with reduction of the secondary structure). They only differ as far as mechanical performances are concerned.



A SINGLE PANEL FOR ROOF AND WALL



Example of horizontal wall with overlap joint



Rationalization of transport and storage

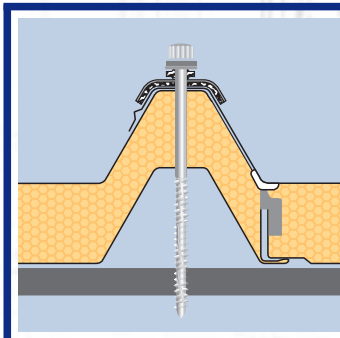
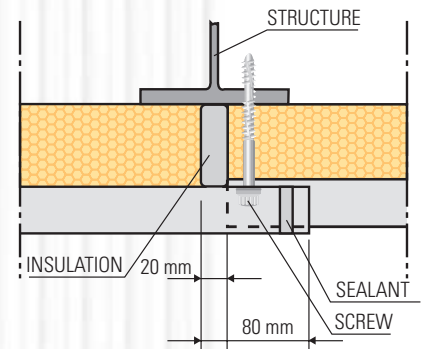
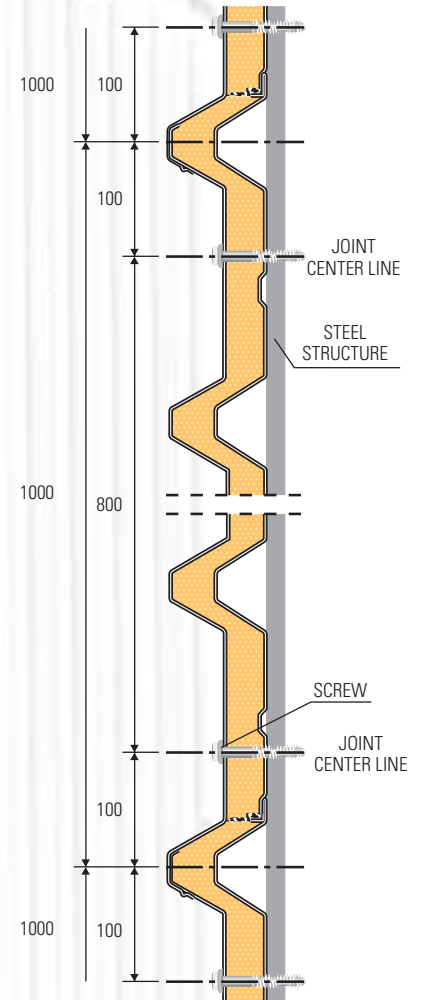
The double parallel ribs of **TWIN®** and **TWIN® DG** allow formation of compact packs which make full use of the load capacity of the transport and storage facilities, improving it by about 30%.

Quicker and safer installation

Thanks to the exclusive conformity of the **TWIN®** and **TWIN® DG** panels as well as their special packaging, difficult operations of tilting at required height of the panels are avoided. Such advantage greatly simplifies the installation operations making them quicker and safer.

Increased load capacity

The double parallel ribbed metal sheet improves the mechanical performance and resistance to loads. The **TWIN® DG** panels can be installed on wider spans, with consequent considerable reduction of costs and installation times of the load-bearing structures.



Special tools for easy installation

